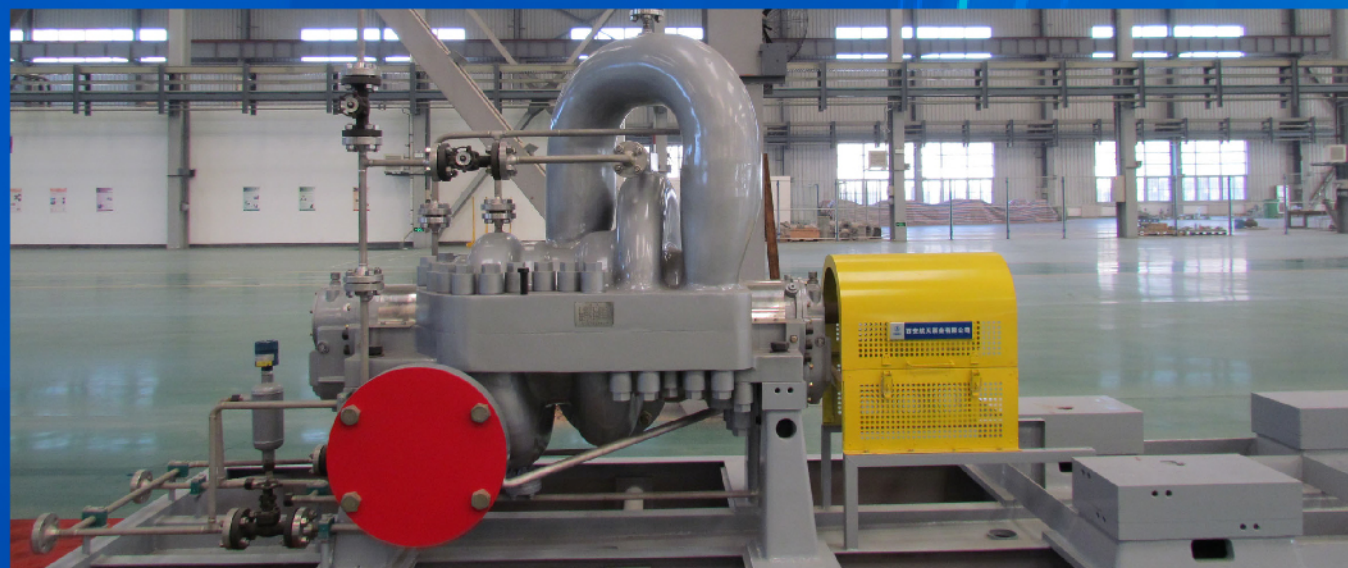


SY、DY、SDY Crude Oil Pump

Relying on the advantages of aerospace liquid technology and combining advanced technologies and experiences, our company developed SY, DY, SDY series of horizontal split-case oil line centrifugal pump. The process of design and manufacture is accord with API610-2004 < Centrifugal pumps for petroleum, chemical and gas industry> standard



Application:

Crude oil, gasoline, diesel oil and other petroleum products which temperature is below 100℃ and without any impurities and corrosive characteristics. They are widely used in refineries, chemical and petro-chemical industry and also can be used in power plant, steel mill, desalination plant, fire-fighting, and oil-field flooding.

Performance Range:

- ◆ Capacity (Q): ~8000m³/h
- ◆ Head (H): ~1500m
- ◆ Speed (N) : 2980rpm/1480rpm
- ◆ Working Pressure (P) : ~20MPa
- ◆ Working Temperature (T) : -45℃~80℃



Heavy Duty Petrochemical Process Pump

Design Standard : According to API 610 OH1 and OH2 type

Performance Range:

- ◆ Size: 25 up to 400mm
- ◆ Capacity: up to 2,600 m³/h
- ◆ Head: up to 250 m
- ◆ Working pressure: up to 7.5 Mpa
- ◆ Operating temperature: -80℃ up to +450℃

Application:

- ◆ Refineries
- ◆ Coal processing
- ◆ Petrochemical industry
- ◆ Paper and pulp industry
- ◆ Sea water
- ◆ Air condition
- ◆ Offshore industry
- ◆ Sugar industry

